

SERIE 400

CARACTERÍSTICAS TÉCNICAS

APLICACIONES : Circuitos neumáticos, oleodinámicos e hidráulicos

TUBERIA A UTILIZAR : Ara Tubos plásticos: POLIURETANO (PU)-POLIETILENO (PE)- POLIAMIDA (PA).

PRESION : Presión máxima de trabajo esta determinada por las características del tubo usado. Presión máxima aconsejada 60 BAR.

TEMPERATURA : Temperatura esta determinada por las características del tubo usado.

Temperatura O-Ring NBR 70: min. -20°C ; max. +90°C

Temperatura O-Ring Viton (FKN) ; min. -15 ; max. +200°C

MATERIAL : Látón UNI EN 12164 CW 614N. Látón UNI EN 12165 CW 617N.

TRATAMIENTO SUPERFICIAL : Oxidación anódica (art.3670). Vibrado (art.3671-3672).

SILENCIADORES : Presión máxima de trabajo para los silenciadores de redecilla de acero y bronce sinterizado 12 bar. Temperatura máx.

+80°C - Temperatura mín. -10°C.

NYLON FIELTRO estática/dinámica. Presión máxima de trabajo 6 bar.

Temperatura máx. +70°C - Temperatura mín. -10°C.

MATERIAL : CUERPO (art. 3730) - Látón UNI EN 12164 CW 614N. REDECILLA (art. 3730) - ALAMBRE DE

ACERO INOXIDABLE AISI 304. CUERPO (art. 3731) - FILTRO (art. 3731) - NYLON. BRONCE ESFERICO SINTERIZADO (art. 3732- 3733).

TRATAMIENTO SUPERFICIAL : Niquelado

ROSCAS : Gas cónica ISO 7 (BSPT)- DIN 2999 - BS 21. Gas cilíndrica ISO 228 (BSPP). Métrico ISO R/262.

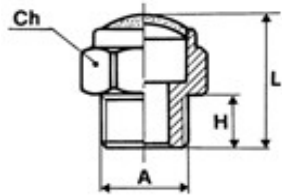
Productos de conformidad con la Directiva –RoHS 2002/95/EC





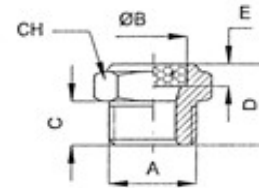
421 Silenciador malla

Código	A	CH	L	H	Conf.
421000	M5	8	8	4	200
421010	1/8	13	15	6	100
421020	1/4	16	18	7	50
421030	3/8	19	20	8	25
421040	1/2	24	22	10	25
421050	3/4	30	26	10	25
421060	1	36	28	12	25



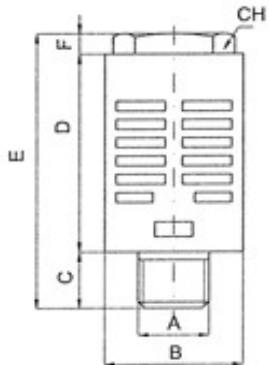
422 Sil. bronce plano

Código	A	CH	D	C	Conf.
422000	M5	8	8	3.5	200
422010	1/8	13	20	6	100
422020	1/4	16	24	8	50
422030	3/8	19	28	9	50
422040	1/2	24	32	10	25
422050	3/4	30	32	10	25
422060	1	36	34	15	25



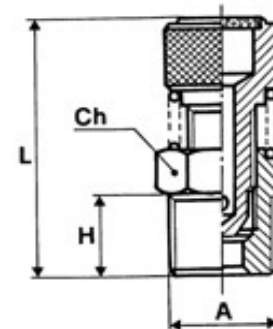
424 Silenciador plástico

Código	A	CH	D	B	C	E	Conf.
424000	1/8	10	28	16	6	34	25
424010	1/4	12	36	19	8	44	25
424020	3/8	17	46	24	10	56	25
424030	1/2	17	46	24	10	56	25



425 Sil. bronce plano regul.

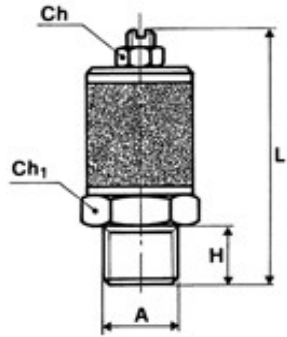
Código	A	CH	H	Lmin	Lmax	Conf.
425000	1/8	13	6	26	28	50
425010	1/4	15	8	30	32	50
425020	3/8	18	10	35	38	25
425030	1/2	22	11	36	39	25





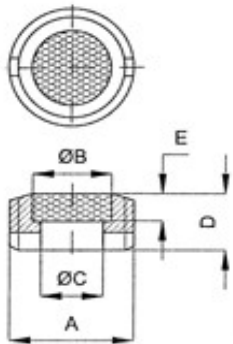
426 Sil. bronce regul.

Código	A	CH1	CH	H	Lmin	Lmax	Conf.
426000	M5	8	6	3.5	16	21	50
426010	1/8	16	10	7	37	43	50
426020	1/4	16	10	9	39	45	25
426030	3/8	22	10	11	48	61	10
426040	1/2	22	10	13	50	63	10



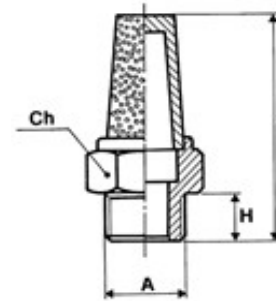
429 Sil. bronce plano allen

Código	A	B	C	D	E	Conf.
429010	1/8	6	5	4	3	200
429020	1/4	8	6	4	3	200
429030	3/8	10	8	5	3	100
429040	1/2	15	12	8	4	50
429050	3/4	20	17	10	4	25
429060	1	26	23	10	4	25



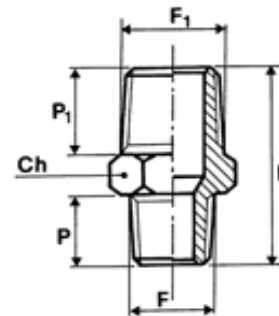
428 Sil. bronce cónico

Código	A	CH	H	L	Conf.
428000	M5	7	3.5	17	100
428010	1/8	12	4.5	21	100
428020	1/4	15	6	27	25
428030	3/8	19	7	35	25
428040	1/2	23	8	40.5	20
428050	3/4	30	9	51.5	10
428060	1	36	11	66	10



430 Unión reducc. macho cónica

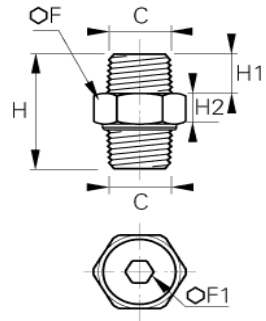
Código	F	F1	P	P1	L	CH	Conf.
430000	1/8	1/4	8	11	24	14	100
430010	1/8	3/8	8	11.5	24.5	17	50
430020	1/4	3/8	11	11.5	27.5	17	50
430025	1/8	1/2	8	14	28	22	50
430030	1/4	1/2	11	14	30.5	22	50
430040	3/8	1/2	11.5	14	31	22	50
430050	1/2	3/4	14	16.5	37	27	25
430060	3/4	1	16.5	19	42.5	34	25





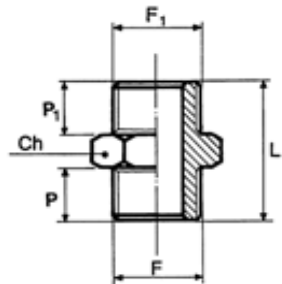
431 Unión macho cón. 3 piezas

Código	C	C	H	H1	H2	F	F1	Conf.
431010	1/8	1/8	33	9.5	8.5	15	5	50
431020	1/8	1/4	34	10.5	8.5	15	5	25
431030	1/4	1/4	38	11	10	19	6	20
431040	1/4	3/8	40	13	10	19	6	20
431050	3/8	3/8	52	13	16	26	10	20
431060	3/8	1/2	53	14	16	26	10	20
431070	1/2	1/2	54	14	16	30	12	20



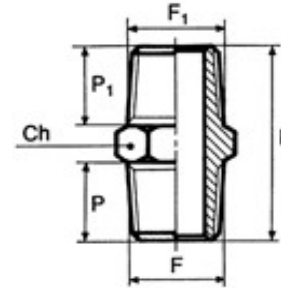
442 Unión macho cil.

Código	F	F1	P	P1	L	CH	Conf.
442000	M5	M5	4	4	11.5	8	100
442010	1/8	1/8	6	6	16.5	14	50
442020	1/4	1/4	8	8	21	17	50
442030	3/8	3/8	9	9	23	19	50
442040	1/2	1/2	10	10	25.5	24	50
442050	3/4	3/4	11	11	28.5	30	25



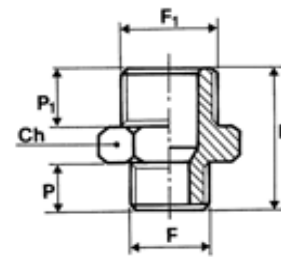
441 Unión macho cónica

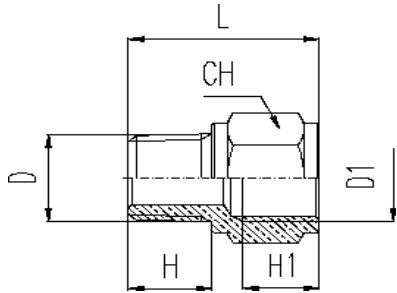
Código	F	F1	P	P1	L	CH	Conf.
441000	1/8	1/8	8	8	20.5	12	100
441010	1/4	1/4	11	11	27	14	50
441020	3/8	3/8	11.5	11.5	28	17	50
441030	1/2	1/2	14	14	33.5	22	50
441040	3/4	3/4	16.5	16.5	39.5	27	20
441050	1	1	19	19	45.5	34	10



443 Unión reducción macho cilíndrico

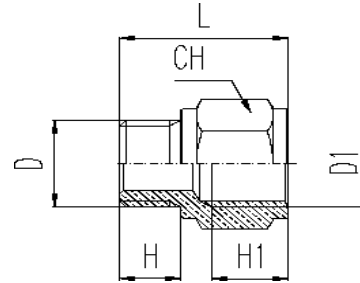
Código	F	F1	P	P1	L	CH	Conf.
443000	M5	1/8	4	6	14.5	14	50
443010	1/8	1/4	6	8	19	17	50
443020	1/8	3/8	6	9	20	19	50
443030	1/4	3/8	8	9	22	19	50
443040	1/4	1/2	8	10	23.5	24	50
443050	3/8	1/2	9	10	24.5	24	50
443060	1/2	3/4	10	11	27.5	30	25
443070	3/4	1	15	23	32	30	25





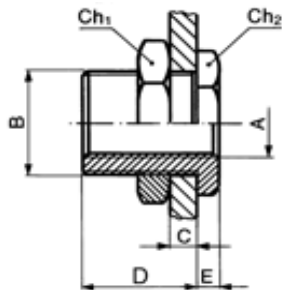
444 Prolongación cón.

Código	D	D1	H	H1	L	CH	Conf.
444000	1/8	1/8	8	8	18	14	50
444010	1/8	1/4	8	11	21.5	17	50
444020	1/8	3/8	8	11.5	22.5	22	25
444030	1/4	1/4	11	11	24.5	17	50
444040	1/4	3/8	11	11.5	25.5	22	50
444050	1/4	1/2	11	14	29	24	50
444060	3/8	3/8	11.5	11.5	26	22	50
444070	3/8	1/2	11.5	14	29.5	24	25
444080	1/2	1/2	14	14	32	26	25
444090	1/2	3/4	14	16.5	35	32	10



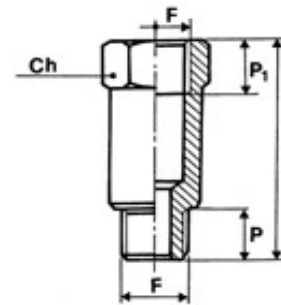
445 Prolongación cil.

Código	D	D1	H	H1	L	CH	Conf.
445000	M5	1/8	4	8	14.5	14	100
445010	1/8	1/8	6	8	16	14	100
445020	1/8	1/4	6	11	19.5	17	50
445030	1/8	3/8	6	11.5	20.5	22	50
445040	1/4	1/4	8	11	21.5	17	50
445050	1/4	3/8	8	11.5	22.5	22	25
445060	1/4	1/2	8	14	26	24	25
445070	3/8	3/8	9	11.5	23.5	22	25
445080	3/8	1/2	9	14	27	24	25
445090	1/2	1/2	10	14	28	26	25



446 Pasatabiques

Código	B	A	D	CMax	E	CH1	CH2	Conf.
446000	M10x1	M5	10.5	7	3.5	14	14	50
446010	M16x1.5	1/8	14	10	4	19	22	50
446020	M20x1.5	1/4	21	16	4	24	27	50
446030	M26x1.5	3/8	21	25	50	30	32	25
446040	M28x1.5	1/2	27	21	6	32	36	25

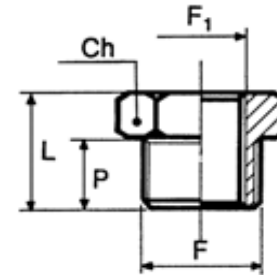
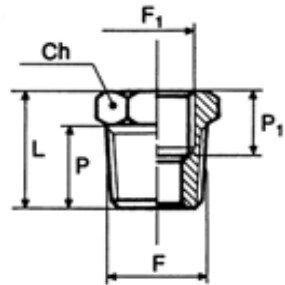


447 Prolongación cil. larga

Código	F	P	P1	L	CH	Conf.
447010	1/8	6	8	22	14	50
447020	1/8	6	8	42	14	50
447030	1/8	6	8	51	14	50
447040	1/4	8	11	35	17	25
447050	1/4	8	11	51	17	50

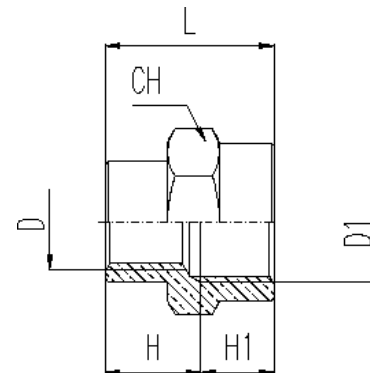
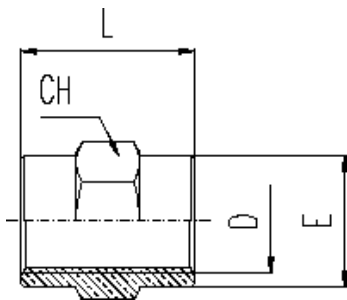
448 Reducción cón.

Código	F	F1	P	P1	L	CH	Conf.
448000	1/4	1/8	11	8	16	14	100
448010	3/8	1/8	11.5	8	16.5	17	50
448020	3/8	1/4	11.5	11	16.5	17	50
448030	1/2	1/8	14	8	19.5	22	25
448040	1/2	1/4	14	11	19.5	22	50
448050	1/2	3/8	14	11.5	19.5	22	25
448060	3/4	3/8	16.5	11.5	23	27	25
448070	3/4	1/2	16.5	14	23	27	25



450 Unión hembra

Código	D	L	CH	Conf.
450000	M5	11	8	100
450010	1/8	15	14	100
450020	1/4	22	17	50
450030	3/8	23	22	25
450040	1/2	28	26	25
450050	3/4	32	32	20
450060	1			20



449 Reducción cil.

Código	F	F1	P	L	CH	Conf.
449000	1/8	M5	6	10.5	14	50
449010	1/4	1/8	8	13	17	50
449020	3/8	1/8	9	14	19	50
449030	3/8	1/4	9	14	19	50
449040	1/2	1/8	10	15.5	24	50
449050	1/2	1/4	10	15.5	24	50
449060	1/2	3/8	10	15.5	24	50
449070	3/4	3/8	11	17.5	30	25
449080	3/4	1/2	11	17.5	30	25

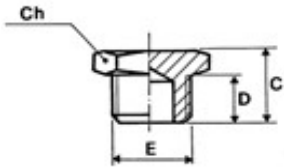
451 Unión reducc. hembra

Código	D	D1	L	CH	Conf.
451000	M5	1/8	13.5	14	50
451010	1/8	1/4	19	17	50
451020	1/8	3/8	20	22	50
451030	1/8	1/2	24	24	25
451040	1/4	3/8	22.5	22	25
451050	1/4	1/2	26	24	50
451060	3/8	1/2	26	24	50
451070	1/2	3/4	30	32	25



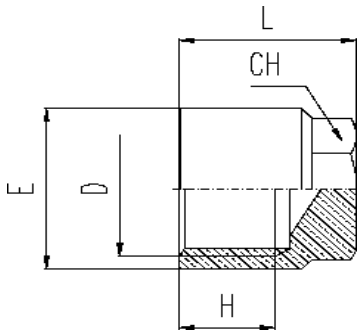
452 Tapón macho cil. hexag.

Código	E	D	C	CH	Conf.
452000	M5	4	7	8	50
452010	1/8	6	10	14	50
452020	1/4	8	12.5	17	50
452030	3/8	9	13.5	19	25
452040	1/2	10	15.5	24	25
452050	3/4	11	16.5	30	20
452060	1	13	19	38	10



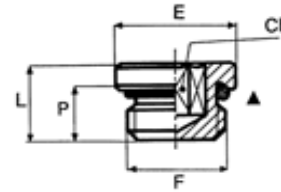
453 Tapón hembra

Código	D	E	H	L	CH	Conf.
453010	1/8	11.5	8.5	11	12	50
453020	1/4	16	11	19	14	50
453030	3/8	20	12	20	17	25
453040	1/2	25	15	24	19	25



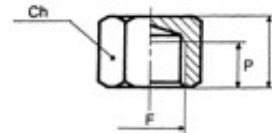
4521 Tapón macho cil. allen

Código	F	E	L	P	CH	Conf.
452100	M5	8	7.2	4.5	2.5	200
452110	1/8	14	9.5	6.5	5	100
452120	1/4	17	11.5	8	6	50
452130	3/8	20	12.5	9	8	50
452140	1/2	26	14	10	10	50



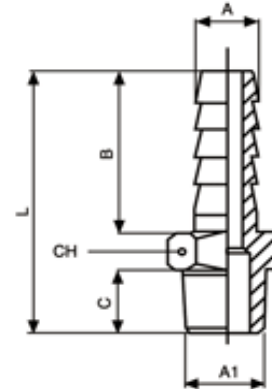
4531 Tapón hembra

Código	F	L	CH	Conf.
453110	1/8	11.5	14	50
453120	1/4	15	17	50
453130	3/8	15.5	20	25
453140	1/2	20	24	25



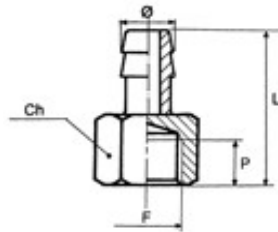
454 Espiga macho cón.

Código	A	A1	C	L	B	CH	Conf.
454010	6	1/8	8	31.5	19	12	50
454020	6	1/4	11	35	19	14	50
454030	7	1/8	8	31.5	19	12	50
454040	7	1/4	11	35	19	14	50
454050	8	1/8	8	31.5	19	12	50
454060	8	1/4	11	35	19	14	50
454070	9	1/8	8	31.5	19	12	50
454080	9	1/4	11	35	19	14	50
454090	9	3/8	11.5	35.5	19	17	50
454100	9	1/2	14	38.5	19	22	50
454110	10	1/8	8	32.5	20	12	50
454120	10	1/4	11	36	20	14	50
454130	10	3/8	11.5	36.5	20	17	50
454140	10	1/2	14	39.5	20	22	50
454150	12	1/4	11	36	20	14	25
454160	12	3/8	11.5	36.5	20	17	25
454170	12	1/2	14	39.5	20	22	25
454180	14	3/8	11.5	38.5	22	17	25
454190	14	1/2	14	41.5	22	22	25
454200	16	3/8	11.5	38.5	22	17	25
454210	16	1/2	14	41.5	22	22	25
454220	16	3/4	16.5	45	22	27	25
454230	17	3/8	11.5	40.5	24	18	25
454240	17	1/2	14	43.5	24	22	25
454250	18	3/8	11.5	40.5	24	19	25



455 Espiga hembra

Código	F	ØT	P	L	L1	CH	Conf.
455010	1/8	6	7	31.5	21	14	100
455020	1/8	7	7	31.5	21	14	100
455030	1/4	7	7.5	28	17	17	100
455040	1/8	8	7.5	31.5	21	14	100
455050	1/4	8	7.5	28	17	17	100
455060	1/8	9	9	31	17	14	100
455070	3/8	12	8.5	34	21	21	25
455080	1/2	12	10	32	17	25	25

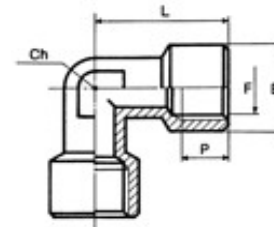


454 Espiga macho cón. (cont.)

Código	A	A1	C	L	B	CH	Conf.
454260	18	1/2	14	43.5	24	22	25
454270	18	3/4	16.5	47	24	27	20
454280	20	3/8	11.5	41	24	22	20
454290	20	1/2	14	43.5	24	22	20
454300	20	3/4	16.5	46.5	24	27	20
454310	25	3/4	16.5	53	30	27	20
454320	25	1	19	56	30	34	20

456 Codo hembra

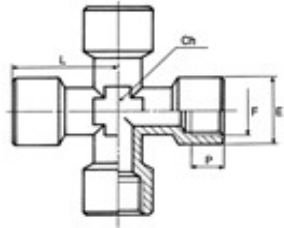
Código	F	P	L	CH	Conf.
456000	M5	4	11	8	50
456010	1/8	8	21	10	50
456020	1/4	11	25.5	13	50
456030	3/8	11.5	28	17	50
456040	1/2	14	33.5	21	25
456050	3/4	16.5	36.5	25	20
456060	1	19	45	30	10





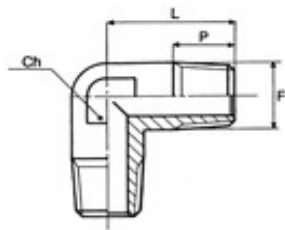
457 Cruz hembra

Código	D	H	L	CH	Conf.
457010	1/8	8	42	10	50
457020	1/4	11	51	13	20
457030	3/8	11.5	56	17	10
457040	1/2	14	67	21	10



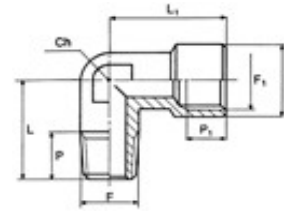
459 Codo macho

Código	F	F1	P	P1	L	L1	CH	Conf.
459000	M5	M5	4	4	11.5	11.5	8	50
459010	1/8	1/8	8	8	18.5	18.5	10	50
459020	1/4	1/4	11	11	23.5	23.5	13	25
459030	1/4	1/8	11	8	19	21.5	10	25
459040	3/8	3/8	11.5	11.5	26	26	17	25
459050	1/2	1/2	14	14	31	31	21	25
459060	3/4	3/4	16	16	33	33	25	10
459070	1	1	17	17	39	39	30	5



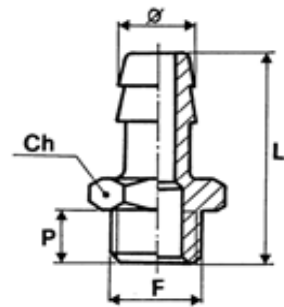
458 Codo hembra-macho

Código	F	F1	P	P1	L	L1	CH	Conf.
458000	M5	M5	4	5	11	11.5	9	100
458010	1/8	1/8	8	8	21	18.5	10	50
458020	1/4	1/4	11	11	25.5	23.5	13	50
458030	1/4	1/8	11	8	21	21.5	10	50
458040	3/8	3/8	11.5	11.5	28	26	17	25
458050	1/2	1/2	14	14	33.5	31	21	25
458060	3/4	3/4	16	16.5	36.5	33	25	20
458070	1	1	17	19	45	39	30	5



460 Espiga macho cil.

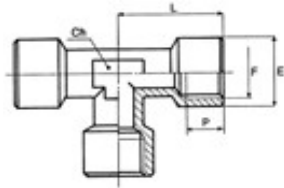
Código	D	F	P	L	L1	CH	Conf.
460010	4.5	M5	4	22.5	15	8	100
460020	6	1/8	6	29.5	19	12	100
460030	6	1/4	8	32	19	14	100
460040	7	1/8	6	29.5	19	12	100
460050	7	1/4	8	32	19	14	50
460060	8	1/8	6	29.5	19	12	50
460070	8	1/4	8	32	19	14	50
460080	8	3/8	9	33	19	19	50
460090	9	1/8	6	29.5	19	12	50
460100	9	1/4	8	32	19	14	50
460110	9	3/8	9	33	19	19	50
460120	10	1/8	6	30.5	20	12	50
460130	10	1/4	8	33	20	14	50
460140	10	3/8	9	34	20	19	50
460150	12	1/4	8	33	20	14	25
460160	12	3/8	9	34	20	19	25
460170	12	1/2	10	35.5	20	22	25
460180	14	3/8	9	36	22	19	25
460190	14	1/2	10	37.5	22	22	25
460200	17	3/8	9	38	24	19	25
460210	17	1/2	10	39.5	24	22	25
460220	18	3/4	11	39.5	24	22	25
460230	20	1/2	10	41.5	24	30	50
460240	20	3/4	11	41.5	24	30	25





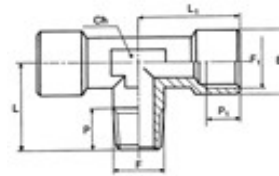
461 Te hembra

Código	D	H	L	CH	Conf.
461000	M5	5	22	9	50
461010	1/8	8	42	10	50
461020	1/4	11	51	13	50
461030	3/8	11.5	56	17	25
461040	1/2	14	67	21	15
461050	3/4	16.5	73	25	10
461060	1	19	90	30	5



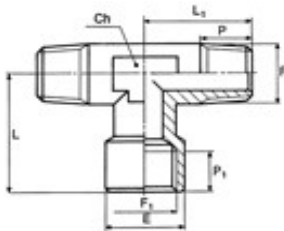
462 Te macho central

Código	F	F1	P	P1	L1x2	L	CH	Conf.
462000	M5	M5	4	5	22	11.5	9	50
462010	1/8	1/8	8	8	42	18.5	10	50
462020	1/4	1/4	11	11	51	23.5	13	50
462030	3/8	3/8	11.5	11.5	56	26	17	25
462040	1/2	1/2	14	14	67	31	21	15
462050	3/4	3/4	16	16.5	73	33	25	10
462060	1	1	17.5	19	90	39	30	5



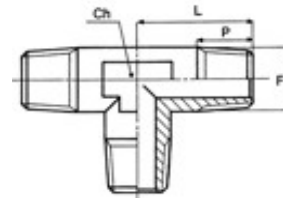
463 Te hembra central

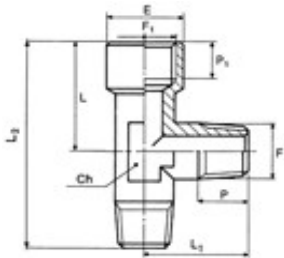
Código	F	F1	P	P1	L1x2	L	CH	Conf.
463010	1/8	1/8	8	8	37	21	10	50
463020	1/4	1/4	11	11	47	25.5	13	50
463030	3/8	3/8	11.5	11.5	52	28	17	25
463040	1/2	1/2	14	14	62	33.5	21	20
463050	3/4	3/4	16	16.5	66.4	36.5	25	10
463060	1	1	17.5	19	78	45	30	5



464 Te macho

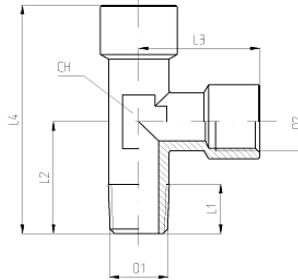
Código	F	P	Lx2	CH	Conf.
464010	1/8	8	37	10	50
464020	1/4	11	47	13	50
464030	3/8	11.5	52	17	50
464040	1/2	14	62	21	25
464050	3/4	16	66.4	25	10
464060	1	17.5	78	30	5





465 Te hembra lateral

Código	F	F1	P	P1	L2	L	L1	CH	Conf.
465010	1/8	1/8	8	8	42	18.5	18.5	10	50
465020	1/4	1/4	11	11	51	23.5	23.5	13	50
465030	3/8	3/8	11.5	11.5	56	26	26	17	25
465040	1/2	1/2	14	14	67	31	31	21	25
465050	3/4	3/4	16	16.5	73	33	33	25	10
465060	1	1	17.5	19	90	39	39	30	5

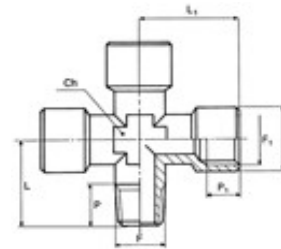
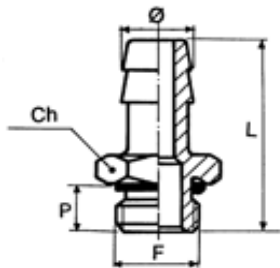


466 Te macho lateral

Código	D1	D2	L1	L2	L3	L4	CH	Conf.
466000	M5	M5	4	5	11	22.5	9	50
466010	1/8	1/8	8	8	21	39.5	10	50
466020	1/4	1/4	11	11	25.5	49	13	50
466030	3/8	3/8	11.5	11.5	28	54	17	25
466040	1/2	1/2	14	14	33.5	64.5	21	20
466050	3/4	3/4	16	16.5	36.5	69.5	25	10
466060	1	1	17.5	19	45	84	30	5

480 Espiga macho cil. c/OR

Código	D	F	L	L1	CH	Conf.
480010	4.5	M5	23	15	8	50
480020	6	1/8	30	19	14	50
480030	6	1/4	32	19	17	50
480040	7	1/8	30	19	14	50
480050	7	1/4	32	19	17	50
480060	8	1/8	30	19	14	50
480070	8	1/4	32	19	17	50
480080	9	1/8	30	19	14	50
480090	9	1/4	32	19	17	50
480100	9	3/8	33	19	20	50
480110	12	1/4	33	20	17	25
480120	12	3/8	34	20	20	25
480130	12	1/2	35.5	20	25	25
480140	17	3/8	38	24	20	25
480150	17	1/2	39.5	24	25	25



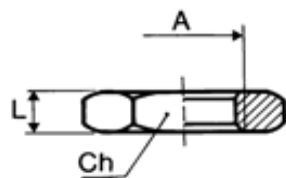
485 Cruz macho(1)-hembra(3)

Código	F	F1	P	P1	L1	L	CH	Conf.
485010	1/8	1/8	8	8	42	18.5	10	25
485020	1/4	1/4	11	11	51	23.5	13	25
485030	3/8	3/8	11.5	11.5	56	26	17	25
485040	1/2	1/2	14	14	67	31	21	10



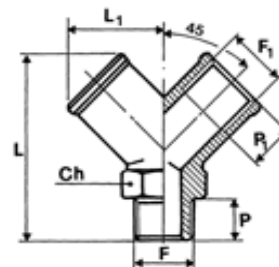
489 Tuerca hembra

Código	A	L	CH	Conf.
489010	1/8	4.5	14	100
489020	1/4	5	17	100
489030	3/8	5.5	19	50
489040	1/2	6	24	50
489050	3/4	6	32	25
489060	1	8	38	25



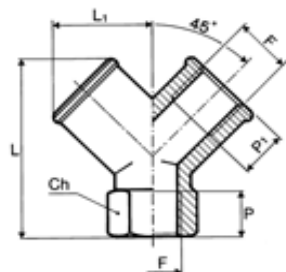
498 Y macho

Código	F	F1	P	P1	L	L1	CH	Conf.
498010	1/8	1/8	8	8	32	14.5	13	50
498020	1/4	1/4	11	11	38	18	17	25
498030	3/8	3/8	11.5	11.5	42.5	20.5	20	25
498040	1/2	1/2	14	14	53	26.5	25	20



4981 Y hembra

Código	F	P	P1	L	L1	CH	Conf.
498110	1/8	8	8	26.5	14.5	13	50
498120	1/4	11	11	32	18	17	25
498130	3/8	11.5	11.5	37	20.5	20	25
498140	1/2	14	14	45	26.5	25	20



474 Cortatubo

Código	Conf.
474000	5

475 Cuchillas

Código	Conf.
475000	3



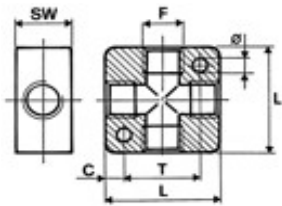


470 Regleta 1

Código	F	L	SW	D	T	Conf.
470010	1/8	25	16	4.5	17	10
470020	1/4	40	20	5.5	26	10
470030	3/8	50	25	5.5	34	10
470040	1/2	50	30	5.5	34	10

REGLETAS ANODIZADAS

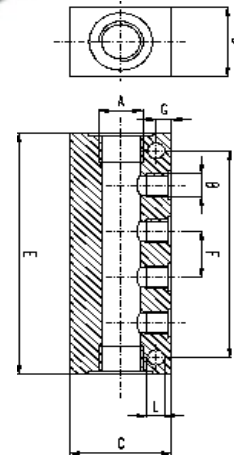
Código	F	L	SW	D	T	Conf.
470110	1/8	25	16	4.5	17	10
470120	1/4	40	20	5.5	26	10
470130	3/8	50	25	5.5	34	10
470140	1/2	50	30	5.5	34	10



471 Regleta 2-5 simple

Código	Nº	A	B	C	D	E	F	G	Conf.
471010	2	1/4	1/8	30	20	54	18	4.5	1
471020	3	1/4	1/8	30	20	72	18	4.5	1
471030	4	1/4	1/8	30	20	90	18	4.5	1
471040	5	1/4	1/8	30	20	108	18	4.5	1
471050	2	3/8	1/4	40	25	68	24	8.5	1
471060	3	3/8	1/4	40	25	92	24	8.5	1
471070	4	3/8	1/4	40	25	116	24	8.5	1
471080	5	3/8	1/4	40	25	140	24	8.5	1

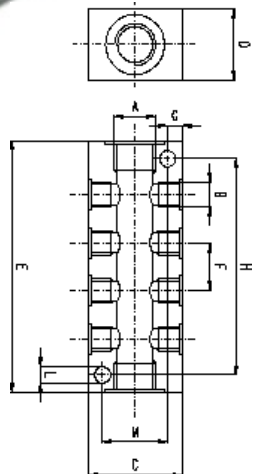
Código	Nº	H	L
471010	2	45	5.5
471020	3	63	5.5
471030	4	81	5.5
471040	5	99	5.5
471050	2	51	5.5
471060	3	75	5.5
471070	4	99	5.5
471080	5	123	5.5



472 Regleta 2-5 doble

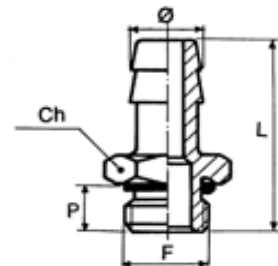
Código	Nº	A	B	C	D	E	F	G	Conf.
472010	2+2	1/4	1/8	30	20	54	18	4.5	1
472020	3+3	1/4	1/8	30	20	72	18	4.5	1
472030	4+4	1/4	1/8	30	20	90	18	4.5	1
472040	5+5	1/4	1/8	30	20	108	18	4.5	1
472050	2+2	3/8	1/4	40	25	68	24	8.5	1
472060	3+3	3/8	1/4	40	25	92	24	8.5	1
472070	4+4	3/8	1/4	40	25	116	24	8.5	1
472080	5+5	3/8	1/4	40	25	140	24	8.5	1

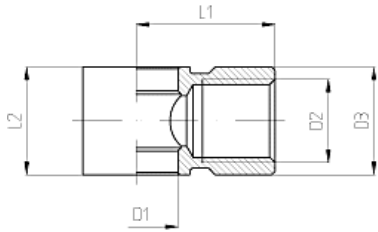
Código	Nº	H	L
472010	2+2	45	5.5
472020	3+3	63	5.5
472030	4+4	81	5.5
472040	5+5	99	5.5
472050	2+2	51	5.5
472060	3+3	75	5.5
472070	4+4	99	5.5
472080	5+5	123	5.5



481 Espiga M cil. c/OR Viton

Código	D	F	L	L1	CH	Conf.
481010	4.5	M5	23	15	8	50
481020	6	1/8	30	19	14	50
481030	6	1/4	32	19	17	50
481040	7	1/8	30	19	14	50
481050	7	1/4	32	19	17	50
481060	8	1/8	30	19	14	50
481070	8	1/4	32	19	17	50
481080	9	1/8	30	19	14	50
481090	9	1/4	32	19	17	50
481100	9	3/8	33	19	20	50
481110	12	1/4	33	20	17	25
481120	12	3/8	34	20	20	25
481130	12	1/2	35.5	20	25	25
481140	17	3/8	38	24	20	25
481150	17	1/2	39.5	24	25	25





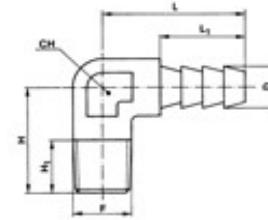
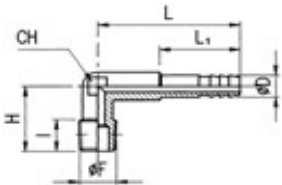
467 Orientable hembra

Código	D1	D2	D3	L1	L2	Conf.
467010	10	1/8	14	20	14,5	25
467020	13,2	1/4	17	24,5	17,5	25
467030	17	3/8	20	29	21	25



491 Codo espiga 90° largo

Código	D	F	H1	H	L	L1	CH	Conf.
491010	6	1/8	8	22	32,5	14	9	100
491020	6	1/8	8	18,5	38	21,5	8	100
491030	6	1/4	11	23	32,5	14	9	100
491040	7	1/8	8	22	32,5	14	9	100
491050	7	1/8	8	18,5	38	21,5	8	100
491060	7	1/4	11	23	32,5	14	9	100



490 Codo espiga 90°

Código	D	F	H1	H	L	L1	CH	Conf.
490010	6	1/8	8	18,5	22,5	14	8	100
490020	6	1/8	8	23	22,5	14	8	100
490030	6	1/4	11	23	23	14	9	100
490040	7	1/8	8	18,5	22,5	14	8	100
490050	7	1/8	8	23	22,5	14	8	100
490060	7	1/4	11	23	23	14	9	100



492 Codo espiga 120°

Código	D	F	H1	H	L	L1	CH	Conf.
492010	6	1/8	8	18,5	38	23,5	8	100
492020	7	1/8	8	18,5	38	23,5	8	100

